



IIH Community Plans is now



Integrated
HEALTHPLAN

2023 Presentation

**Giving You the Care and
Attention You Deserve**



Integrated
HEALTHPLAN

IIHCP Community Choice (HMO) *and introducing* IIHCP Attentive Care (HMO)

For 2023 plan details, refer to the 2023 Summary of Benefits.

Who We Are



"Being a local plan within our community helps us serve our members and their families as they navigate what can be a very complex health system. Our presence here in Fresno allows us to be at the forefront, and provide resources and answers for our members, their families, and the greater community." - Javier Sanchez, Integrated HealthPlan CEO

Integrated HealthPlan (formerly IIH Community Plans) was formed in 2021 as a company focused on building a Medicare Advantage plan that serves the local community.

Our parent company, Innovative Integrated Health, Inc. (IIH), has a longstanding commitment to the Central Valley, operating PACE Organizations in the area and serving thousands of residents with services beyond just healthcare.

Our focus is to help seniors and their families navigate through the Medicare process, to connect our members to resources that help them live happier and healthier lives, and to make this process as easy as possible.



Compliance

- To certify and be RTS all Agents must:
 - submit a copy of 2023 AHIP, license and E&O
 - Pass certification exam with an 85% or better
 - Complete updated producer contract
- Applications should be faxed/ emailed/ uploaded all within 24 hours of receipt
 - Fax number is: **1-855-500-8699**
 - Secure email: BrokerSupport@iihcplans.com
 - Upload (call broker support to set up SFTP)
- Please call Broker support to set up Electronic enrollment
- Agents are responsible for adhering to updated CMS marketing rules and regulations

Broker support number
1-800-757-4350



2023 IHCP Community Choice (HMO) Benefit Highlights

PLAN COST		PLAN BENEFITS	
Monthly Plan Premium	\$0	Primary Care Office Visit	\$0
Annual Medical Deductible	\$0	Specialist Office Visit	\$10
Maximum Out of Pocket (MOOP)	\$4000	Preventive Services	\$0
		Outpatient Rehabilitation (OT, PT, ST)	\$10
		Diagnostic Radiology (CT, MRI, PET)	\$50
		Diagnostic Tests and Procedures	\$0
		Durable Medical Equipment (DME)	20% coinsurance
		Prosthetics (braces, artificial limbs)	20% coinsurance

2023 IHCP Community Choice (HMO) Benefit Highlights

HOSPITAL AND EMERGENCY CARE

Inpatient Hospital Care	You pay \$150 per day for days 1-6 You pay \$0 per day for days 7-90
Skilled Nursing Facility	You pay \$0 per day for days 1-20 You pay \$175 per day for days 21-100
Outpatient Surgery	\$200
Ambulatory Surgical Center/Hospital	\$50
Outpatient Mental Health Services (Individual and Group Sessions)	\$10
Emergency Care	\$110 (waived if admitted within 24 hours)
Worldwide Emergency and Urgent Care	\$0 (Maximum Benefit Coverage \$25,000)
Urgent Care Services	\$0 copay
Ambulance Services (air and ground)	\$90 per one-way trip

2023 IHCP Community Choice (HMO) Benefit Highlights

PRESCRIPTION DRUG COVERAGE

Part D Deductible

\$100 (does not apply to Tier 1)

	Standard (30-day supply)	Standard (90-day supply)	Mail-Order (90-day supply)
Tier 1: Preferred Generic	\$0	\$0	\$0
Tier 2: Generic	\$10	\$30	\$20
Tier 3: Preferred Brand	\$47 Insulins: \$35	\$141 Insulins: \$105	\$94 Insulins: \$70
Tier 4: Non-Preferred Brand	\$100	\$300	\$200
Tier 5: Specialty Tier	31%	31%	Not available

Important Message About Insulin

You won't pay more than \$35 for a one-month supply of each insulin product covered by the plan, no matter what cost sharing tier it's on, even if you haven't paid your deductible



YOU PAY
\$35

for the following insulin drugs in Tier 3

Drugs include:

Humalog	Humulin 70/30
Humalog Mix	Lantus
Lyumiev	Toujeo
Humulin R	Soliqua
Humulin N	

2023 IHCP Attentive Care (HMO) Benefit Highlights

PLAN COST		PLAN BENEFITS	
Monthly Plan Premium	\$38.90	Primary Care Office Visit	\$0
Annual Medical Deductible	\$0	Specialist Office Visit	\$10
Maximum Out of Pocket (MOOP)	\$6,500	Preventive Services	\$0
		Outpatient Rehabilitation (OT, PT, ST)	\$10
		Diagnostic Radiology (CT, MRI, PET)	\$25
		Diagnostic Tests and Procedures	\$0
		Durable Medical Equipment (DME)	20% coinsurance
		Prosthetics (braces, artificial limbs)	20% coinsurance

2023 IHCP Attentive Care (HMO) Benefit Highlights

HOSPITAL AND EMERGENCY CARE

Inpatient Hospital Care	You pay \$100 per day for days 1-6 You pay \$0 per day for days 7-90
Skilled Nursing Facility	You pay \$0 per day for days 1-20 You pay \$175 per day for days 21-100
Outpatient Surgery	\$100
Ambulatory Surgical Center/Hospital	\$50
Outpatient Mental Health Services (Individual and Group Sessions)	\$10
Emergency Care	\$75 (waived if admitted within 24 hours)
Worldwide Emergency and Urgent Care	\$0 (Maximum Benefit Coverage \$25,000)
Urgent Care Services	\$0 copay
Ambulance Services (air and ground)	\$90 per one-way trip

2023 IHCP Attentive Care (HMO) Benefit Highlights

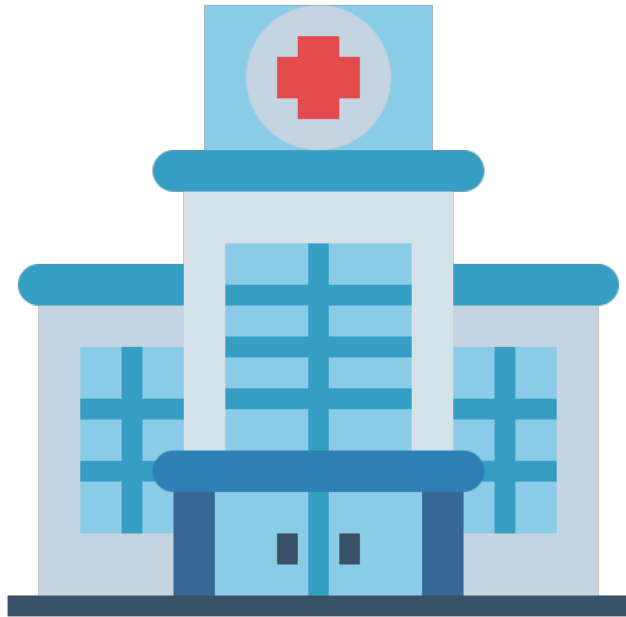
PRESCRIPTION DRUG COVERAGE

Part D Deductible

\$505 (does not apply to Tier 1)

	Standard (30-day supply)	Standard (90-day supply)	Mail-Order (90-day supply)
Tier 1: Preferred Generic	\$0	\$0	\$0
Tier 2: Generic	25%	25%	25%
Tier 3: Preferred Brand	25% Insulins: \$35	25% Insulins: \$105	25% Insulins: \$70
Tier 4: Non-Preferred Brand	25%	25%	25%
Tier 5: Specialty Tier	25%	Not available	Not available

Integrated HealthPlan - Contracted Hospitals



Fresno County Hospitals

- | | |
|--|--|
| • Clovis Community Medical Center | • Deran Koligian Ambulatory Care Center |
| • Community Ambulatory Infusion Center | • Fresno Community Hospital & Medical Center North Medical Plaza |
| • Community Behavioral Health Center | • Fresno Heart & Surgical Hospital, a Community Regional Medical Center Campus |
| • Community Cancer Institute | • Fresno Surgery Center |
| • Community Outpatient Rehabilitation Center | • Infusion Clinic@Ambulatory Infusion Center - Clovis |
| • Community Regional Medical Center | • Saint Agnes Medical Center |

Kern County Hospitals

- | | |
|---------------------------------|--------------------------------|
| • Bakersfield Memorial Hospital | • Mercy Southwest Hospital |
| • Kern Medical Center | • Ridgecrest Regional Hospital |
| • Mercy Hospital (Bakersfield) | |

Integrated HealthPlan – Contracted & Delegated Providers



• Advanced Rheumatology and Arthritis Center	• Family Wellness Clinic, Inc	• Ridgecrest
• Albert R Swafford MD	• Franco Felizarta	• Riverwalk Medical Corporation
• Bacci and Glinn Physical Therapy	• Gallagher Family Chiropractic	• Shyam Bhaskar MD, Inc
• Central Valley Surgical Specialists	• Golden State Eye Medical Group	• Southern California Vascular Institute
• Community Health Partners	• Kern Cardiology Medical Group	• St. Agnes
• Comprehensive Neurosurgery & Spine Institute (CNSI)	• Kern County Health Authority	• Stockdale Radiology Physicians Services, Inc.
• Daniel A Watrous MD	• Kern County Neurological Medical Group	• University Faculty Associates
• Diego G. Allende, DO, A Medical Corporation	• Kern Psychiatric Health and Wellness Center, Inc	• Valley ENT
• Dignity Health Medical Foundation	• Kova Healthcare	• VIPMD
• Dr Yoo's Rehab and Pain Clinic	• Lance Y Zimmerman	
• Edgar S Macias MD Inc	• Oak Hills Medical Corporation	

Over-the-Counter through VantagePoint

Integrated HealthPlan members will receive a quarterly over-the-counter (OTC) benefit that allows them to purchase commonly used OTC health products.

IIHCP Community Choice: \$80 per quarter, for a total yearly benefit of **\$320**

IIHCP Attentive Care: \$120 per quarter, for a total yearly benefit of **\$480**

Choose any brand! The list displays the categories of over-the-counter (OTC) items covered by our OTC benefit.



- In-home testing & monitoring
- First aid supplies
- Minerals & vitamins
- Medicines, ointments & sprays with active medical ingredients
- Hormone replacement
- Weight loss items
- Fiber supplements
- Incontinence supplies
- Mouth care

VANTAGEPOINT
BENEFIT ADMINISTRATORS

Fitness Benefit

\$0 through Peerfit Move

Peerfit Move is a diverse, easy to use fitness experience. This fitness membership provides members flexible fitness options that encourages members to connect and maintain a healthy lifestyle.

Group fitness classes and flexible gym memberships encourage activity, build community, and develop healthy habits, to drive engagement for members.

This fitness benefit is provided at no additional cost. Members will be able to continue their current fitness routine while having access to a variety of new activities.



Fitness Benefit through Peerfit

Peerfit Move Credits

- ✓ Peerfit Move credits are virtual tokens that can be used to reserve fitness experiences within the Peerfit Network.
 - **Innovative Integrated Health Community Plans** will be providing all members with **30 credits** per month to use for the fitness experiences of their choice.
 - Members receive a new disbursement of credits into their account at the beginning of each month.
 - Unused credits do not roll over to the next month.
- ✓ Each fitness experience has an associated credit “cost”, which varies based on fitness type, facility location, and facility pricing.
- ✓ Additional credits may be purchased if a member uses more than their allotment within a given month

Contains Peerfit, Inc. Confidential & Proprietary Information - Public Disclosure Prohibited
For Broker Use Only

A graphic of a smartphone screen displaying a congratulatory message. The screen has a black border and rounded corners. The background is white with colorful confetti. At the top, it says "Congratulations" in a bold, dark font. Below that, it says "Your Medicare Advantage Plan has given you:". In the center, there is a large, colorful circular graphic with the number "30" in white, and "Credits / Month" written below it. At the bottom of the screen, there is a purple button with the text "Let's Get Started". Below the button, it says "Please check your email and click the verification link to activate your account."/>

Congratulations
Your Medicare Advantage Plan has given you:

30
Credits / Month

Sign up for gym memberships and book studio classes with your credits. Credits reset on the 1st of each month.

Let's Get Started

Please check your email and click the verification link to activate your account.



Keeping your mind “physically fit” is important. Brain fitness helps strengthen connections in order to maintain important brain functions. Exercising the brain should be on every adult’s daily to-do list. BrainHQ is offered at no-cost to IIH Community Plan members.

Features include:

- Mental games that focus on attention, memory, brain speed, intelligence, navigation, and people skills exercises
- A useful and meaningful workout tailored to your unique brain. Using a special method, each exercise adapts in difficulty as you use it so you’re always working at your optimum level—where you are most likely to improve your performance





vision care

Integrated HealthPlan members get personalized care from a VSP network doctor at low out-of-pocket costs.



BENEFIT	DESCRIPTION	COPAY	FREQUENCY
Your Coverage with a VSP Provider			
WellVision Exam	Focuses on your eyes and overall wellness	\$0	Every 12 months
Prescription Glasses		\$0	See frame and lenses
Frames	<ul style="list-style-type: none"> • \$150 frame allowance • 20% savings on the amount over your allowance • Included in Prescription Glasses 	\$0	Every 12 months
Lenses	Single vision, lined bifocal, and lined trifocal lenses Included in Prescription Glasses	\$0	Every 12 months
Lens Enhancements	20% off lens enhancements	\$0	Every 12 months
Contacts (instead of glasses)	\$150 allowance for contacts and contact lens exam (fitting and evaluation) 15% savings on a contact lens exam (fitting and evaluation)	\$0	Every 12 months

VSP guarantees coverage from VSP network doctors only.

TruHearing®

Integrated HealthPlan members get routine hearing coverage such as:

- \$0 Routine Hearing Exam
- \$0 Hearing aids fitting and evaluation

Along with routine coverage, Integrated HealthPlan members also get a Hearing Aid benefit that includes 2 hearing aids per year:

Level	Copay	Your benefit also includes
Basic	\$295	Risk-free 60-day trial period
Standard	\$695	1 year of follow-up visits
Advanced	\$1,095	80 free batteries per non-rechargeable hearing aid
Premium	\$1,495	Full 3-year manufacturer warranty





Integrated HealthPlan offers routine dental care services through the DentaQuest provider network.

- \$0 copay per visit
- Preventive Dental Services
 - 1 oral exam every 6 months
 - 1 cleaning every 6 months
 - 1 fluoride treatment per year
 - 1 dental X-Ray every 3 years
- Comprehensive Dental Services
 - \$2,000 Maximum Plan Benefit Coverage
 - 2 visits per year for:
 - Restorative Services
 - Endodontics
 - Extractions
 - Prosthodontics





\$0 copay

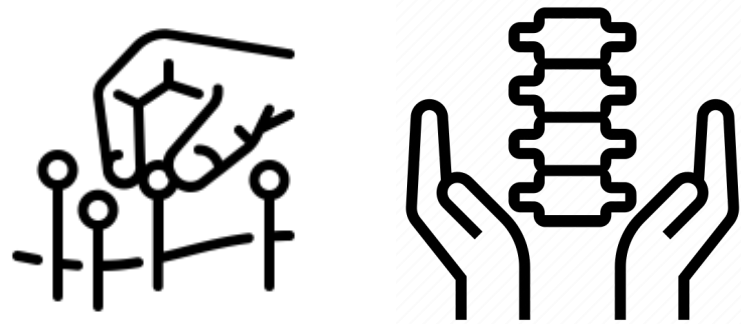
(50 one-way trips for plan-approved locations. Maximum mileage per trip is 50 miles)

CareCar is known for its people first approach, highest on-time rates, and shortest wait times across the country. With Integrated HealthPlan, members get rides to plan-approved health-related locations at no cost with CareCar.

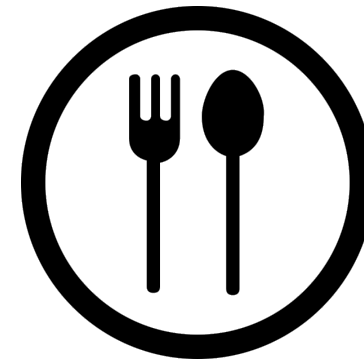


Acupuncture and Chiropractic Services Meals Benefit

- Routine Acupuncture and Chiropractic Services
 - \$0 per visit
 - 30 visits per year, combined Acupuncture & Chiropractic



- Meals Benefit
 - \$0 copay
 - 2 meals per day, for 14 days immediately following surgery or inpatient hospitalization



Special Supplemental Benefits*

\$0 copayment (Authorization rules may apply)

IIHCP Community Choice & IIHCP Attentive Care Members with ESRD, Chronic Kidney Disease (CKD) or Diabetes are eligible for the following:

- **Dialysis In-area Out-of-Network benefit**
 - *Limited to members with ESRD*
- **Fresh Produce Box**
 - *One box per month limited to members with ESRD, Chronic Kidney Disease (CKD), or Diabetes conditions*
- **Blood Pressure Cuff**
 - *Limited to members with CKD*
- **Weight Scale**
 - *Limited to members with CKD*
- **Medication dispenser**
 - *Limited to members with CKD or ESRD*
- **Friend/Family Transportation Reimbursement (For IIHCP Attentive Care Members Only)**
 - *Limited to ESRD members on dialysis*
 - *If regular transportation benefit is not used and member is privately transported to dialysis service, the member will receive \$0.60 per mile for transportation to dialysis services. Maximum mileage per trip is 50 miles.*



* The benefits mentioned are a part of special supplemental program for the chronically ill. Not all members qualify.

Enrolling a new member



As you are going through the enrolling process, be sure to:

- Help the Enrollee choose a PCP in the Integrated HealthPlan network
- Verify the PCP ID number based on the Provider's location that the enrollee prefers
- Enter the information in the enrollment form



Thank You

